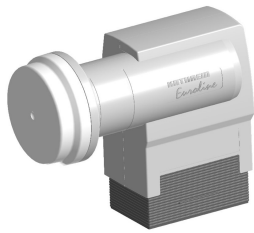


Order number: 20110028

Open text field 1:

- Universal twin LNB, HDTV/DVB-S2 compatible, connection of two satellite receivers or one twin receiver
- The KATHREIN Euroline universal feed systems are suitable for satellite receiver systems with a 40 mm LNB holder
- 3 year guarantee in accordance with KATHREIN guarantee terms



Hersteller: Kathrein

KEL 422

Product information "KEL 422"

Universal twin LNB - 10.70-12.75 GHz - 2 switchable outputs
(14/18 V, 0/22 kHz) - Current drain: Typical 125 mA

Type:	KEL 422
Order no.:	20110028
Input frequency:	10,7-11,7/11,7-12,75 GHz
Gain:	58 dB
Output frequency:	950-1950/1100-2150 MHz
Oscillator frequency (L.O.):	9,75/10,6 GHz
Typical Current drain:	125 mA
Supply voltage:	11.5-14 (vert.)/16-19 (horiz.) V
Output:	2 x F-Connector
Control signals:	0 (Low-Band)/22 (High-Band) kHz
Feed fixture dimension (Ø):	40 mm
Dimensions with cap:	131 x 63 x 108 mm
Packaging unit/weight:	1 (10)/0.34 pc/kg